



CAM SOFTWARE & SUPPORT

A DIVISION OF TCG TECHNOLOGIES, LLC

TABLE OF CONTENTS

1. BEFORE YOU BEGIN	2
A. BACKUP YOUR DATA	
B. FINDING YOUR PROGRAM FILES DIRECTORY	
C. FINDING YOUR DATA FILES DIRECTORY	
2. UPGRADE INSTRUCTIONS	3
3. FULL INSTALLATION INSTRUCTIONS	8
4. INSTALLING MTFS 1.03 – RHS Users	11
5. INSTALLING CAMSPool 2000	12
6. ACCESSING/PRINTING THE CAM II MANUAL	15
7. IF YOU NEED HELP	16
8. CD ROM CONTENTS	16

BEFORE YOU BEGIN

YOU MAY SKIP THIS SECTION IF YOU ARE NOT UPGRADING AN EXISTING CAM II INSTALLATION

A. BACKUP YOUR DATA

IMPORTANT: PERFORM A BACKUP OF **ALL** YOUR CURRENT DATABASES **BEFORE** YOU INSTALL THE UPGRADE. ALSO, IF YOU HAVE MADE CHANGES TO ANY FORM OR REPORT AND DID NOT SAVE THE FILE WITH A DIFFERENT EXTENSION, YOU MUST BACKUP YOUR FORMS AND REPORTS. OTHERWISE, **ALL FORMS WITH .CAM EXTENSIONS WILL BE OVERWRITTEN.**

B. Finding Your Program Files Directory

1. Access the CAM II System
2. Go into File Management and press F3 to identify your program files directory.
3. At the top of the screen, you will see Directory of: "program directory". For example, if it says "Directory of: C:\CAMSYS*.*", then the name of your directory is C:\CAMSYS
HINT: Most systems have a program directory of C:\CAMSYS.
4. Write down the name of the displayed program files directory.
5. Exit the CAM II System.

C. Finding Your Data Files Directory/s

If you only have one property on your computer

1. Access the CAM II System.
2. Go into File Management and press F1 to identify your data files directory.
3. At the top of the screen, you will see Directory of: "data files directory". For example, if it says "Directory of: C:\CAMSYS\CAMDATA.001*.*", then the name of your directory is C:\CAMSYS\CAMDATA.001
HINT: Most systems with only 1 property have a data files directory of C:\CAMSYS\CAMDATA.001
4. Write down the name of the displayed program files directory.
5. Exit the CAM II System.

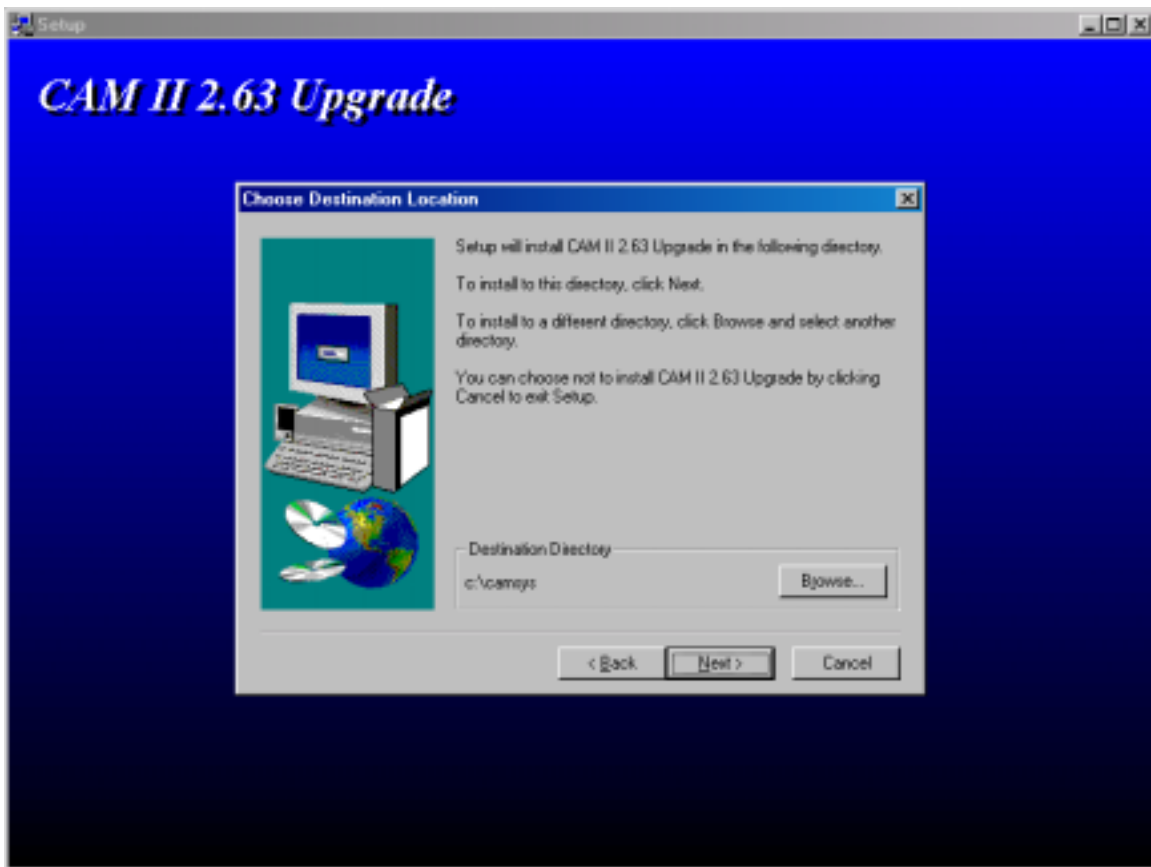
If you have more than one property on your computer

1. Access the CAM II System
2. From the main menu, press Alt-Q to display your property listing.
3. Write down all directory file paths listed under the "Data file path" column
4. Exit the CAM II System.

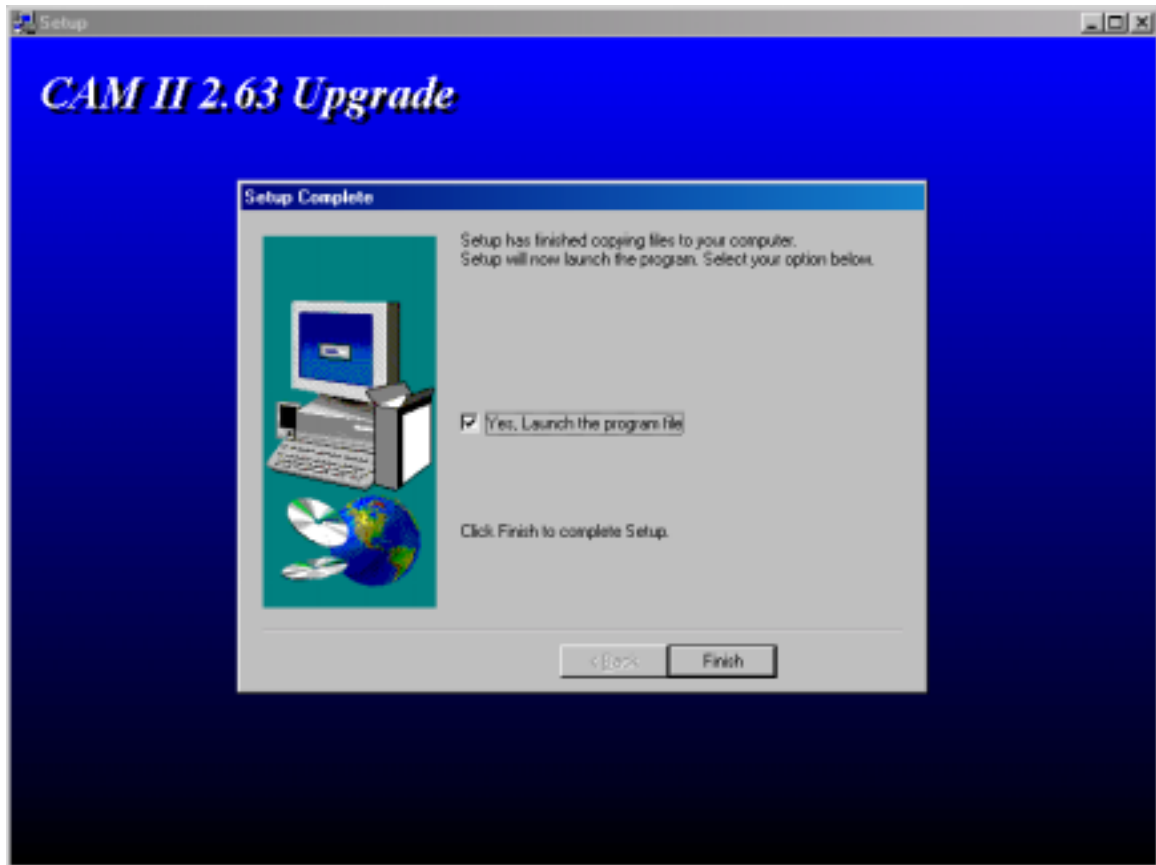
UPGRADE INSTRUCTIONS

YOU MAY SKIP THIS SECTION IF YOU ARE NOT UPGRADING AN EXISTING CAM II INSTALLATION

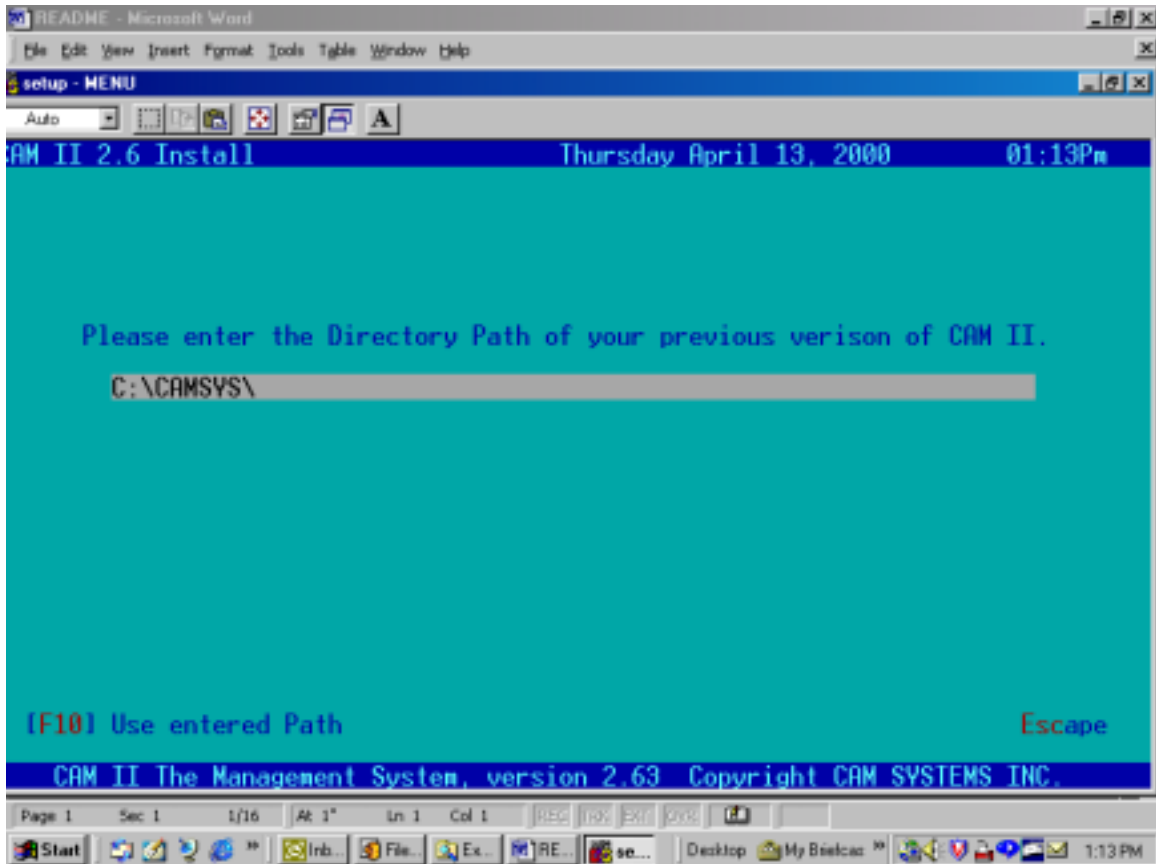
1. Exit all applications that you may be currently running.
2. From the Windows Desktop, double-click on My Computer, then double-click on your CD-ROM device.
3. You will see several folders listed on the CD-ROM. Double-click on the folder named CAM II 2.62 Upgrade. In the CAM II 2.63 Upgrade folder, you will see a file named Upgrade263. Double click on the Upgrade263 file to start the installation. You will be asked if you want to continue, click on the Yes button.
4. After a few seconds, you will be warned about exiting all programs. If you have not done so already, please do so. Click on the Next button to continue.
5. You will see the following screen:
If the destination directory displayed does not match the one you wrote down earlier, then click on the Browse button and select the correct folder. Otherwise, click the Next button to continue.



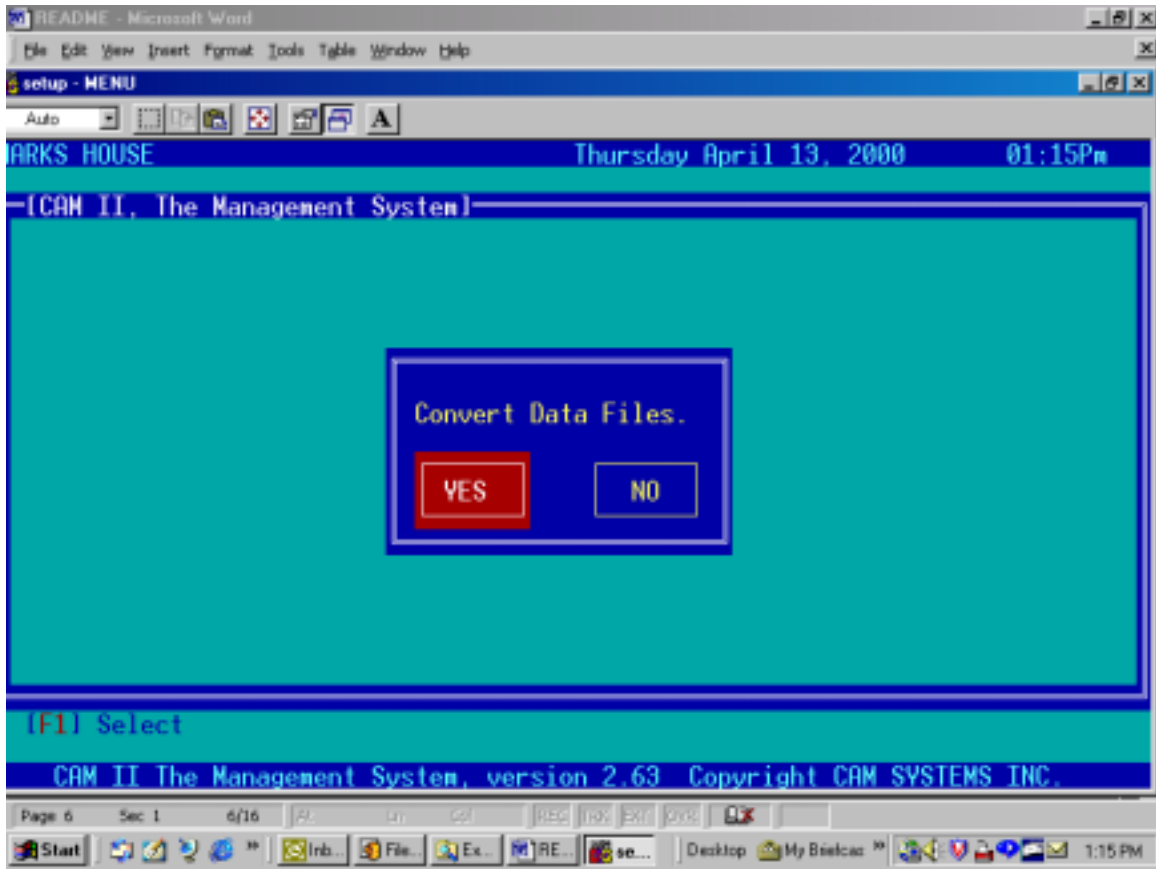
6. On the next screen, you are asked what start menu folder you want to place the CAM II icons in. The default is CAM II 2.63, to accept the default, click the Next button. If you want to change the default, simply type the name you want to give the folder, then click the Next button.
7. At this point, the installation program will start installing the new program files into your program directory. Do not click on the Cancel button unless you have made a mistake in selecting where you want to install the new program files. After the installation program finishes, you will be asked if you want to launch the program file and to finish the installation. Click on the checkbox to launch the program file, then click on the Finish button.



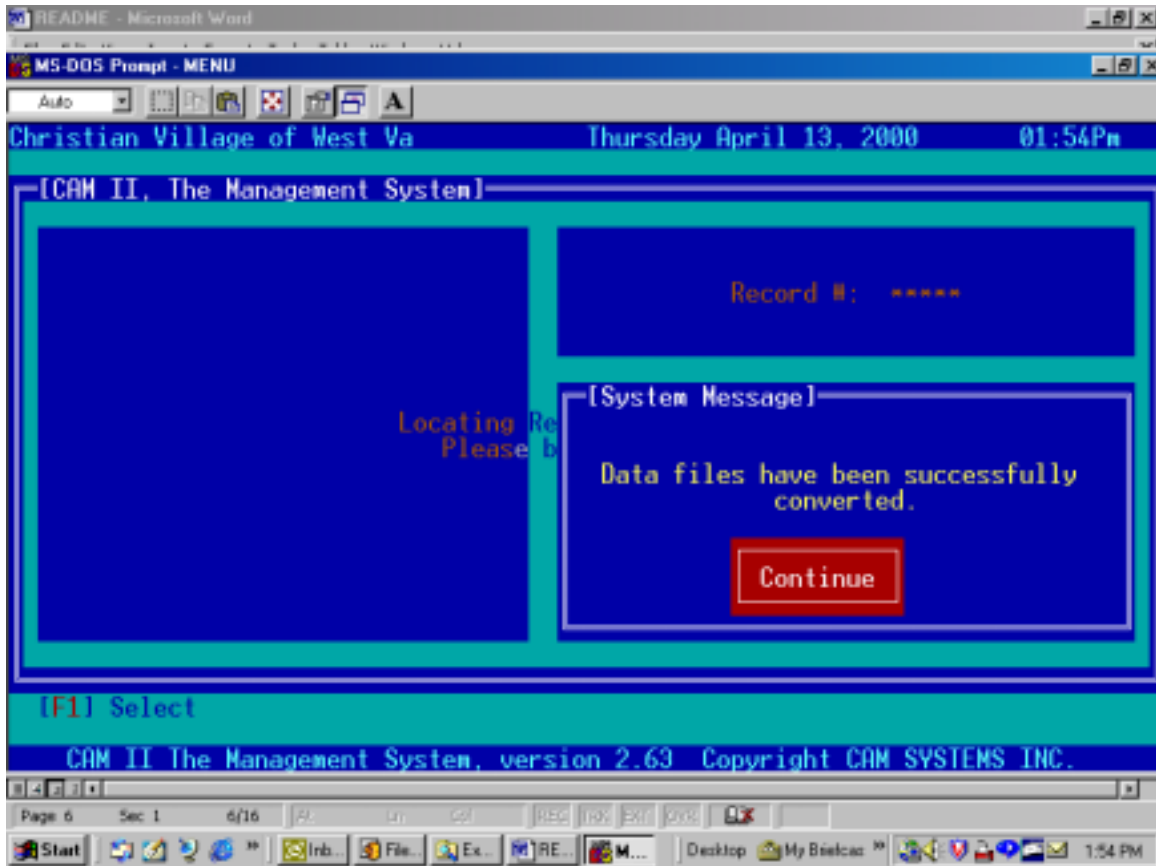
8. You will be brought to the CAM II 2.63 Install screen in DOS. Using your arrow keys, choose the Upgrade option and hit [Enter] or press F1.
9. On the next screen, select the Continue with Upgrade option and press [Enter] or F1.
10. You will see the following screen:
Make sure that the directory path displayed matches the one you wrote down earlier. This should also be the same path you selected in Step 5. Press F10 to use the entered path or type the correct path, hit the [Enter] key, then press F10.



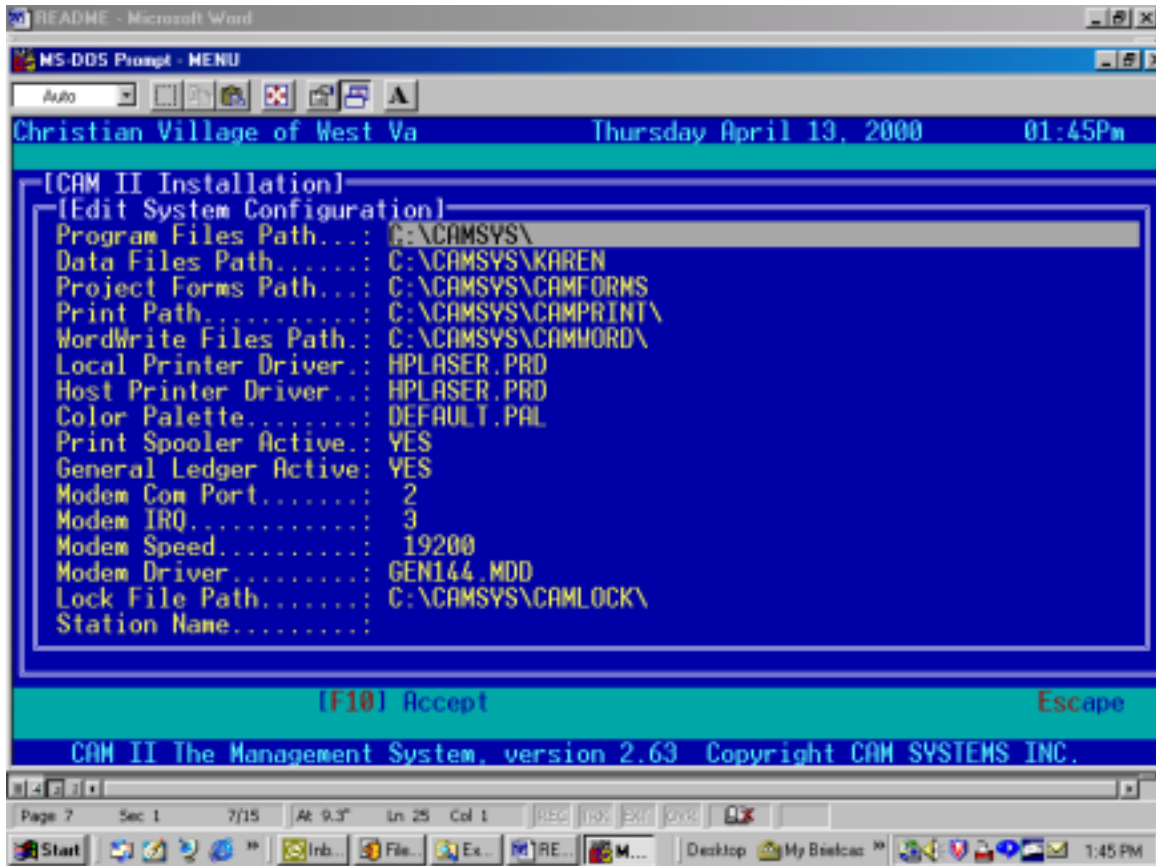
11. Press F10 to use the Entered Station and continue the upgrade.
12. At this point, you should see the name of your property listed at the top left corner of your screen. Select the Installation option listed at the top of the menu dialog box.
If you do not see the correct property listed, skip to Step 19.
13. You will be brought to the password screen in CAM II. Type the high level (Level 1) password for your property and hit [Enter].
14. You should be asked whether you want to convert your data files or not. If you do not receive the following screen, skip to Step 19:
Select the Yes option to convert your data.



15. You should have already backed up your data at this point. If not, we HIGHLY recommend doing so. You will have to abort the upgrade process and backup your data, then select the Setup icon in the CAM II 2.63 start menu folder to pick up where you left off. Otherwise, select the Yes option to continue the conversion process.
16. The next screen will display your program, forms, and data paths. If it is correct, press F10 to Begin the conversion. If it is not correct, skip to Step 19.
17. After a few seconds, the conversion process should end and you should receive the following screen:
If you receive an error message of any kind, please call 800-548-6656 for assistance.



18. Hit the [Enter] key or F1 to continue. ***If this is the only property you have to convert, you are finished with the upgrade process.*** You may press [Esc] several times to exit the installation program. If you have other properties on your computer, continue with Step 19.
Hint: At the Change Autoexec.bat and Config.sys screen, only choose Yes if you want to load CAM II before running Windows '95/98. Choosing Yes is not necessary unless your computer technician or administrator has told you to do so. Choose No otherwise.
19. If you have more than one property, or are not given the option to convert data files, or do not have the correct file paths listed in Step 16, or do not have the correct property displayed in Step 12, then you must edit your system configuration (CAM.INI) file. Exit CAM II by pressing the [Esc] key several times if you are still in the installation program.
20. From the Windows '95/98/NT start menu, select Programs, CAM II 2.63, then click on the Setup icon to run the installation program again. You will be brought to the CAM II 2.63 Install screen in DOS. Using your arrow key, choose the Upgrade option and press [Enter] or F1.
21. Repeat Steps 9 – 11.
22. Choose the "Edit System Installation" option from the menu by pressing your arrow key to highlight it and pressing [Enter] or F1.
23. You should see the following screen:
 Make sure that all file paths listed are correct and match the information you wrote down earlier. If they are not correct, arrow to the appropriate field and edit it. If you are trying to convert another property, arrow to the "Data Files Path" field and type in the location of the next property to convert. When you finish, press F10 to save your changes.

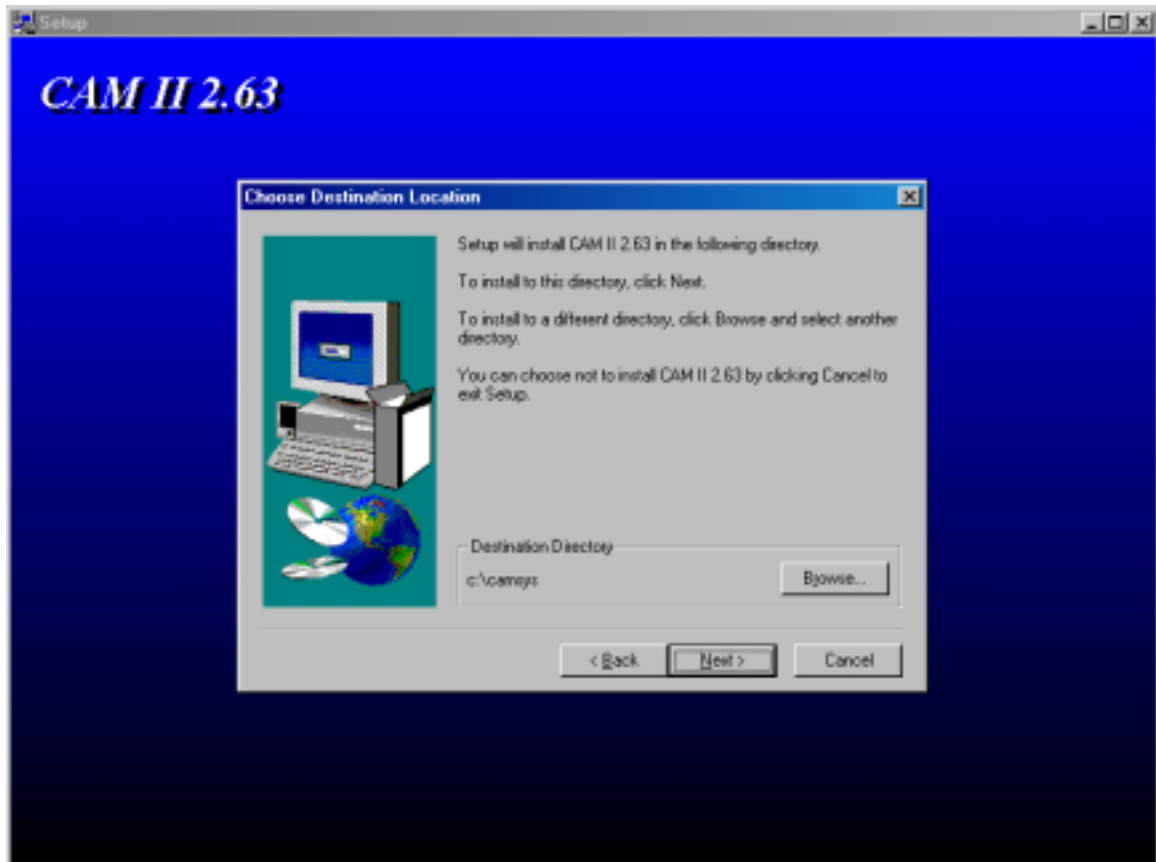


24. You will be asked if you want to Change the Autoexec.bat and Config.sys files. Press [Esc] twice to return to the installation menu.
25. Select the "Installation" option by pressing [Enter] or F1.
26. You should receive the screen displayed at Step 14. Select Yes to convert your data files.
27. Continue on using Steps 15 – 18.

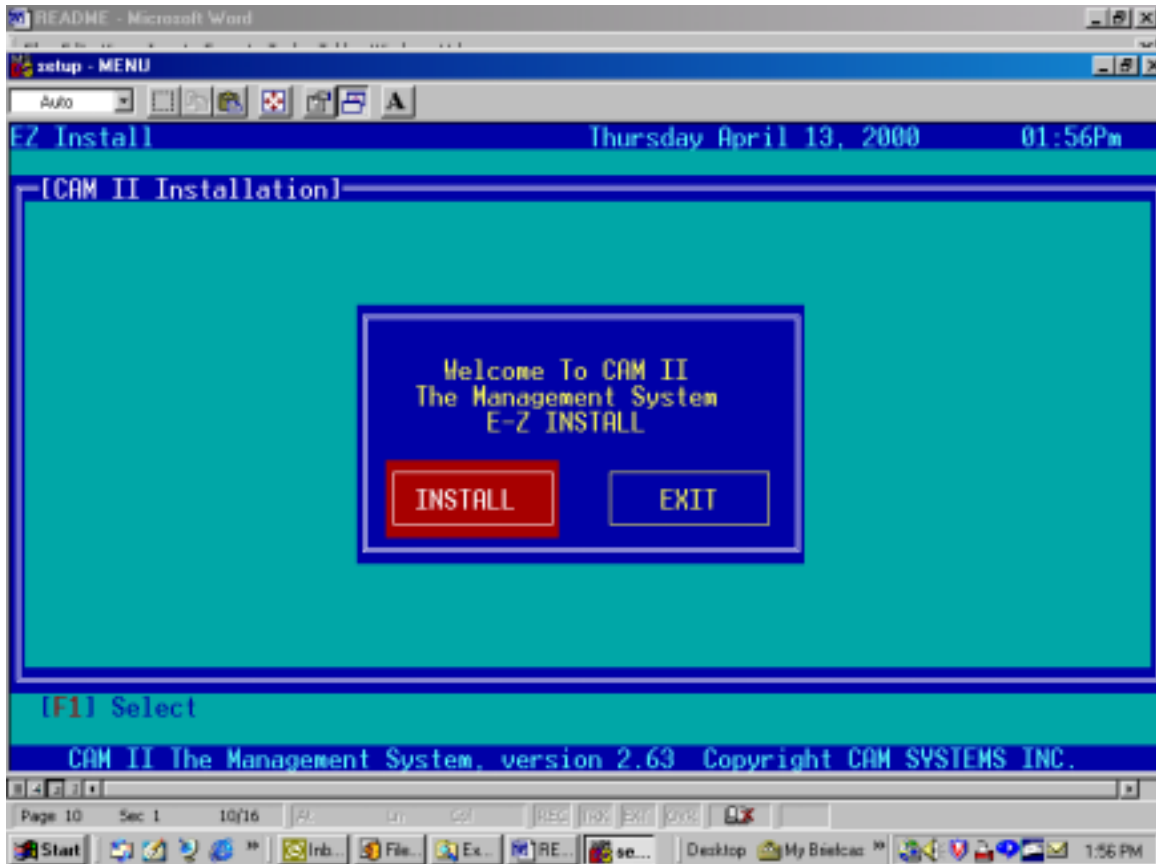
REPEAT STEPS 19 – 27 FOR EVERY PROPERTY YOU WANT TO CONVERT.

FULL INSTALLATION INSTRUCTIONS

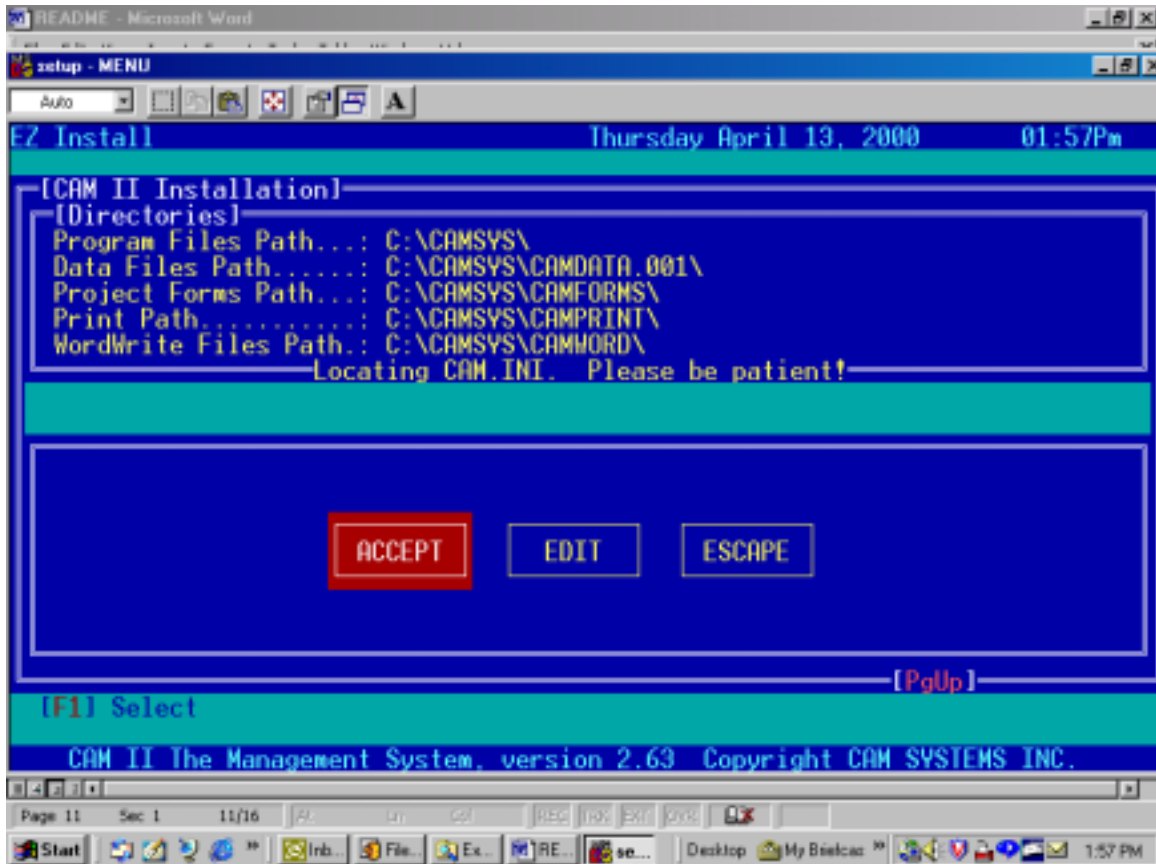
1. Exit all applications that you may be currently running.
2. From the Windows Desktop, double-click on My Computer, then double-click on your CD-ROM device.
3. You will see several folders listed on the CD-ROM. Double-click on the folder named New CAM 2.63 Install. In the New CAM 2.63 Install folder, you will see a file named Setupex. Double click on the Setupex file to start the installation. You will be asked if you want to continue, click on the Yes button.
4. After a few seconds, you will be warned about exiting all programs. If you have not done so already, please do so. Click on the Next button to continue.
5. You will see the following screen:
Accept the default directory or you may change it if you wish. Otherwise, click the Next button to continue.



6. On the next screen, you are asked what start menu folder you want to place the CAM II icons in. The default is CAM II 2.63, to accept the default, click the Next button. If you want to change the default, simply type the name you want to give the folder, then click the Next button.
7. At this point, the installation program will start installing the new program files into your program directory. Do not click on the Cancel button unless you have made a mistake in selecting where you want to install the new program files. After the installation program finishes, you will be asked if you want to launch the program file and to finish the installation. Click on the checkbox to launch the program file, then click on the Finish button.
8. You will be brought to the CAM II 2.63 Install screen in DOS. Using your arrow keys, choose the "New Install" option and hit [Enter] or press F1.
9. You will see the following screen:
Press F1 to select "Install".



10. Use your arrow key to highlight the appropriate printer driver for your local printer and press F1 or [Enter] to select.
11. Use your arrow key to highlight the appropriate printer driver for your host(remote) printer and press F1 or [Enter] to select. If you do not know what type of hose printer you have, select the same type as your local printer.
12. Use your arrow key to highlight the appropriate setting for your General Ledger module and press F1 or [Enter] to select.
13. You should see the following screen:
Select the "Edit" option and arrow down to the Wordwrite Files Path field. Type the same file path as the one displayed in the Project Forms Path field. When finished, press [Enter] and F10 to accept your entries.

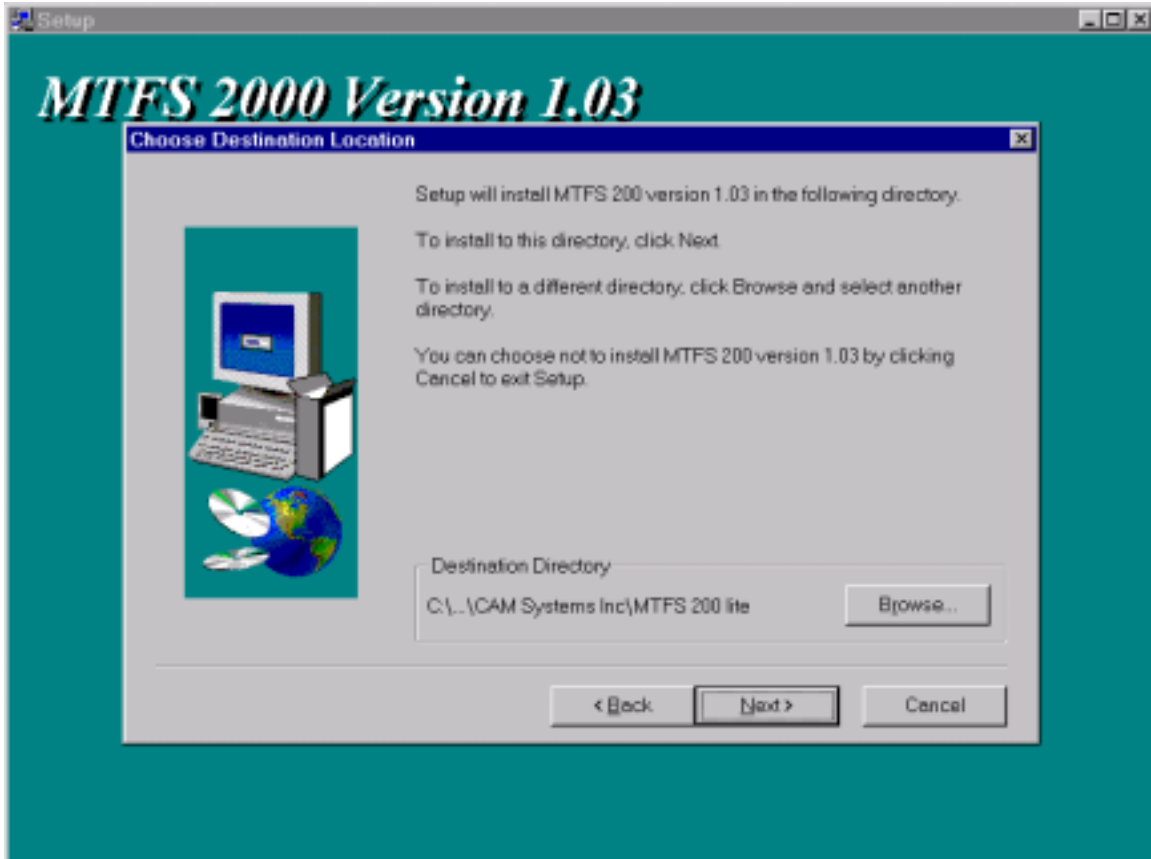


14. At the Change Autoexec.bat and Config.sys screen, only choose Yes if you want to load CAM II before running Windows '95/98. Choosing Yes is not necessary unless your computer technician or administrator has told you to do so. Choose No otherwise.

YOU ARE FINISHED THE WITH INSTALLATION PROGRAM. YOU MAY PRESS [ESC] SEVERAL TIMES TO EXIT AND RETURN TO WINDOWS '95/'98/NT. REFER TO YOUR SETUP WORKBOOK FOR INSTRUCTIONS ON HOW TO SETUP YOUR PROPERTY.

INSTALLING MTFS 1.03 – FOR RHS USERS ONLY

1. Exit all applications that you may be currently running.
2. From the Windows Desktop, double-click on My Computer, then double-click on your CD-ROM device.
3. You will see several folders listed on the CD-ROM. Double-click on the folder named MTFS 1.03. In the MTFS 1.03 folder, you will see a file named Setup. Double click on the Setup file to start the installation. You will be asked if you want to continue, click on the Yes button.
4. After a few seconds, you will be warned about exiting all programs. If you have not done so already, please do so. Click on the Next button to continue.
5. You will see the following screen:
Accept the default directory or you may change it if you wish. Otherwise, click the Next button to continue.



6. On the next screen, you are asked what start menu folder you want to place the MTFS icons in. The default is SuiteCAM MTFS, however you may create a different folder or choose an existing folder, such as the CAM II 2.62 folder. When finished, click the Next button, then click the Next button again to confirm the location of program files.
7. At this point, the installation program will start installing the new program files into your program directory. Do not click on the Cancel button unless you have made a mistake in selecting where you want to install the new program files. After the installation program finishes, you will be notified. Simply click the Finish button when presented.

YOU MAY NOW RUN MTFS 1.03 FROM THE WINDOWS '95/'98/NT START MENU. REFER TO THE ONLINE DOCUMENTATION FOR INSTRUCTIONS ON HOW TO SETUP.

INSTALLING CAMSPool 2000

1. Exit all applications that you may be currently running.
2. From the Windows Desktop, double-click on My Computer, then double-click on your CD-ROM device.
3. You will see several folders listed on the CD-ROM. Double-click on the folder named CAMSpool 2000. In the CAMSpool 2000 folder, you will see a file named Setupex. Double click on the Setupex file to start the installation. You will be asked if you want to continue, click on the Yes button.
4. Click on the Next button to accept the default directory. The default directory should be the same directory as the one you used when installing CAM II 2.62. You may change the default directory by clicking on the Browse button and selecting a different directory or you may create a new directory if you wish.

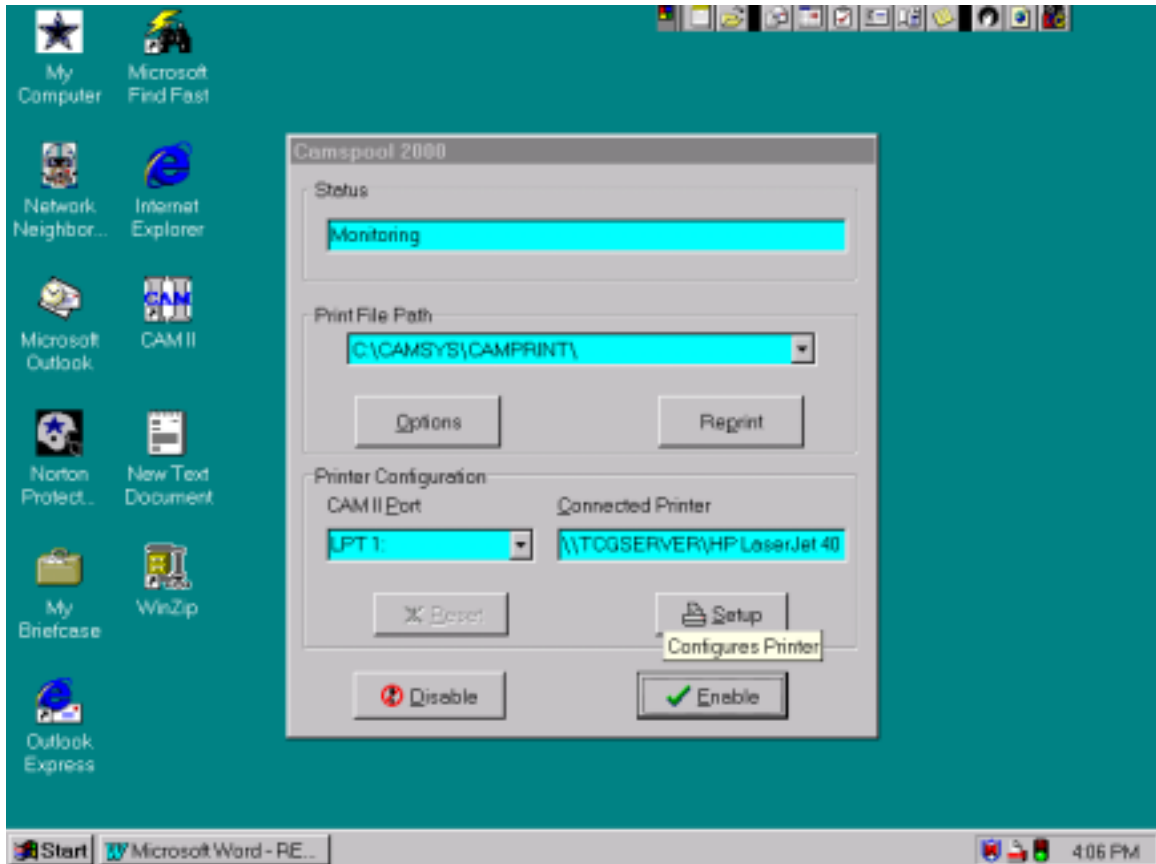
5. After selecting the installation directory, you will be presented with the following screen: On this screen you must select the folder on the Startmenu you want to place the CAMSpool 2000 icon in. To accept the default, click the Next button. Otherwise, you may select a different folder or create a new one.



6. After a few seconds, you will be informed that the installation program has finished and you will be presented with the following screen: Leave the checkbox marked to restart your computer and then click the Finish button. Your computer should restart and automatically run CAMSpool 2000.



7. After restarting your computer, you will see a new icon in the lower right portion of your screen in the system tray. The CAMSpool 2000 icon is a red printer with a white sheet of paper coming out of the top. Double-click on this icon to configure the program. You will see the following screen:



8. If the printer you want to use with CAM II is listed in the Connected Printer box and the Status field reads “Monitoring”, you have properly installed the program. Click on the Enable button to close the box.

YOU ARE NOW FINISHED INSTALLING CAMSPool 2000. IF YOU NEED HELP CONFIGURING CAMSPool 2000, USE THE WINDOWS BASED ON-LINE HELP FILE FOR INFORMATION. YOU CAN ACCESS THE ON-LINE HELP FILE BY GOING TO YOUR STARTMENU AND SELECTING THE HELP ICON IN THE CAMSPool 2000 FOLDER.

ACCESSING/PRINTING THE CAM 2.62 MANUAL, ADDENDA TO 2.58 MANUAL, AND 2.63 ADDENDUM

1. From the Windows Desktop, double-click on My Computer, then double-click on your CD-ROM device.
2. You will see several folders listed on the CD-ROM. Double-click on the folder named 262 manual. In the 262 manual folder, you will see several document files which can be opened using Microsoft Word '97 or Microsoft Word 2000.
3. Simply double-click on any file to open the document. We have named each file according to the information it contains. i.e. Collect file contains information on the CAM II Collections module.
4. If you only require an addendum to your existing manual, double-click on the folder named Addenda to 2.58 Manual or 2.63 Addendum, you will see 2.58 or 2.63 manual addenda which can be opened using Microsoft Word '97 or Microsoft Word 2000.

YOU MAY READ AND PRINT ANY DOCUMENT ON THIS CD PROVIDED THAT IT IS FOR YOUR OR YOUR COMPANY'S USE. YOU DO NOT HAVE PERMISSION TO SELL THESE DOCUMENTS WITHOUT TCG TECHNOLOGIES, LLC 'S WRITTEN CONSENT.

IF YOU NEED HELP

PLEASE CALL (800) 548-6656 IF YOU ARE AN EXISTING USER OR (800) CAM-9999 IF YOU ARE CONSIDERING PURCHASING OUR PRODUCT.

CD ROM CONTENTS

